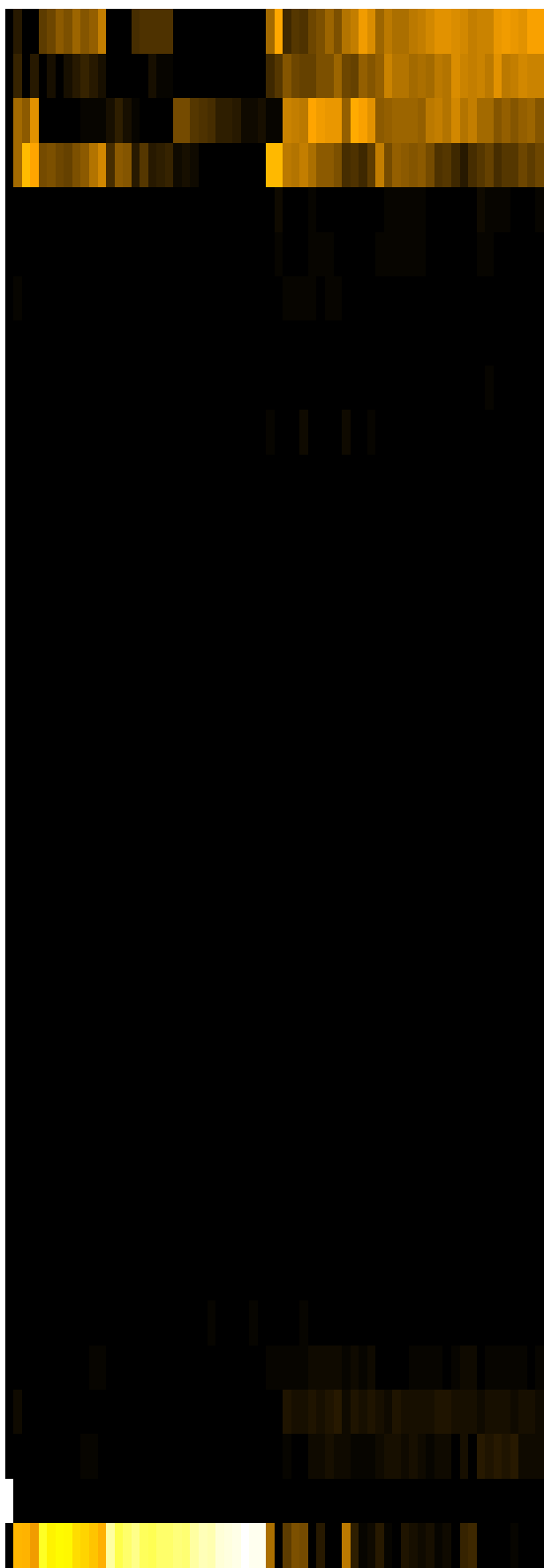
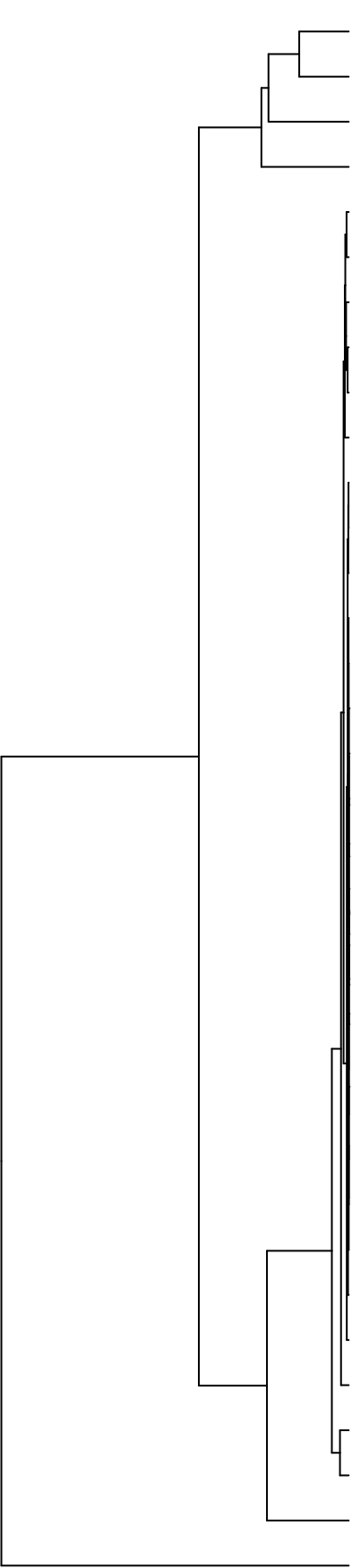


Group006  
 D Final -PMA  
 B Final -PMA



- Veillonellaceae
- Pasteurellaceae
- Streptococcaceae
- Neisseriaceae
- Campylobacteraceae
- Porphyromonadaceae
- Gemellaceae
- Leptotrichiaceae
- Prevotellaceae
- Micrococcaceae
- Erysipelotrichaceae
- Atopobiaceae
- Lachnospiraceae
- Saccharibacteria\_(TM7)\_[F-1]
- Burkholderiaceae
- Weeksellaceae
- Phyllobacteriaceae
- Mycobacteriaceae
- Rhizobiaceae
- Microbacteriaceae
- Sphingomonadaceae
- Hymenobacteraceae
- Saccharibacteria\_(TM7)\_[F-2]
- Comamonadaceae
- Flavobacteriaceae
- Moraxellaceae
- Propionibacteriaceae
- Absconditabacteria\_(SR1)\_[F-1]
- Yersiniaceae
- Staphylococcaceae
- Actinomycetaceae
- Carnobacteriaceae
- Fusobacteriaceae
- Pseudomonadaceae
- Enterobacteriaceae

- F28914.S583
- F28914.S568
- F28914.S420
- F28914.S422
- F28914.S578
- F28914.S584
- F28914.S566
- F28914.S563
- F28914.S419
- F28914.S580
- F28914.S562
- F28914.S565
- F28914.S407
- F28914.S404
- F28914.S401
- F28914.S402
- F28914.S423
- F28914.S085
- F28914.S087
- F28914.S086
- F28914.S243
- F28914.S248
- F28914.S097
- F28914.S098
- F28914.S100
- F28914.S241
- F28914.S263
- F28914.S244
- F28914.S104
- F28914.S258
- F28914.S259
- F28914.S261

Family

Samples